



24 Nelson Court, Glen  
View, Gravesend

Offers In The Region  
Of £115,000

TBC

- Two Double Bedroom 1st floor Retirement Flat
- Wet Room With Bath & Shower
- Communal Restaurant
- Popular McCarthy Stone Development
- Fully Fitted Kitchen
- On Site Manager





## 24 Nelson Court Glen View, Gravesend, Kent, DA12 1PL



### LOCATION:

Nelson Court is situated on Glen View which is part of Windmill Hill Conservation Area. Close to Gravesend Town Centre which is ideal if you fancy a spot of shopping or lunch in one of the many café bars/restaurants the town has to offer. Alternatively, Bluewater shopping centre is only 10-15 minutes by car or 30 minutes by bus. There are local shops and facilities at Echo Square or if you fancy a trip to London, Gravesend mainline railway station offers services on its domestic line or you can catch the high speed train to St Pancras, London in just 22 minutes, or a trip to the seaside, then Whitstable, Herne Bay, Margate and Ramsgate on the Kent Coastal Towns are approximately an hours car or train ride away. Ebbsfleet International Railway Station is within approximately three miles where you can catch a high speed train and be in London within 17 minutes. The A2, M2, M20, M25 Motorway links are all easily accessed.



## DESCRIPTION:

We are pleased to bring to market this two bedroom first floor apartment within the popular McCarthy Stone's Assisted living retirement development designed specifically for the over 60's. Offering independence within a secure environment, an Estate Manager along with a team of assistant estate managers who provide 24 hour coverage, giving that all important, extra peace of mind. We understand one hour a week of domestic help for the residents is included in the service charge and additional help can be purchased if required. There is a restaurant on site where you can order a three course meal, a communal residents lounge provides a place where you can get together with your neighbours for a chat over a cup of tea or coffee and there is a function room where various activities and games take place. Other benefits include two lifts, a communal laundry room and a guest suite which can be hired separately, a battery scooter store and landscaped communal gardens.

## FRONTAGE & MAIN ENTRANCE

The property is approached by a paved path way leading to the main entrance which is on the third floor. Security doors lead into the main reception area which is located on the third floor and where visitors are to sign in. There is a security entry phone system to all the apartments. The restaurant, communal lounge, function room and lifts are all located on this level. Well tended landscaped communal gardens surround the property. There is a communal parking area.

## HALL:

Entrance door, entry phone hand set, emergency intercom, emergency pull cord, walk in in airing cupboard comprising hot water cylinder, immersion heater and electrical consumer unit. Intruder alarm.

## LOUNGE/DINER

6.10m x 3.51m (20' x 11'6")

Double glazed window to front overlooking Parrock Street. Carpet, night storage heater, electric fire within surround, emergency pull cord. Double doors leading into:

## KITCHEN:

2.82m x 2.11m (9'3 x 6'11")

Double glazed window to front over looking Parrock Street, Vinyl flooring, tiled splash backs. fitted with wall and base units, work surface space, built in electric oven, hob and extractor. Integrated fridge & freezer.

## BEDROOM 1:

5.64m into bay x 3.28m (18'6" into bay x 10'9")

Double glazed bay window to front, carpet, night storage heater, emergency pull cord.

## BEDROOM 2:

4.83m x 2.84m narrowing to 2.46m (15'10 x 9'4 narrowing to 8'1)

Double glazed window to front, carpet, built in wardrobe, night storage heater, emergency pull cord.





### WET ROOM:

2.72m x 2.44m (8'11 x 8)

Suite comprising: walk in shower area, panelled bath, vanity wash basin, w.c., electric heated towel rail, tiled walls, electric wall heater, emergency pull cord.

### TENURE:

LEASEHOLD: We understand the length of the lease was 125 years from 2008 - 110 years remaining

We understand the current service charge is £991 per month - £11 893 pa.

Ground Rent: £510 Per annum

### SERVICES:

ELECTRICITY, WATER MAINS DRAINAGE  
COUNCIL TAX BAND E: £2,674.11 2024/2025

### LOCAL AUTHORITY

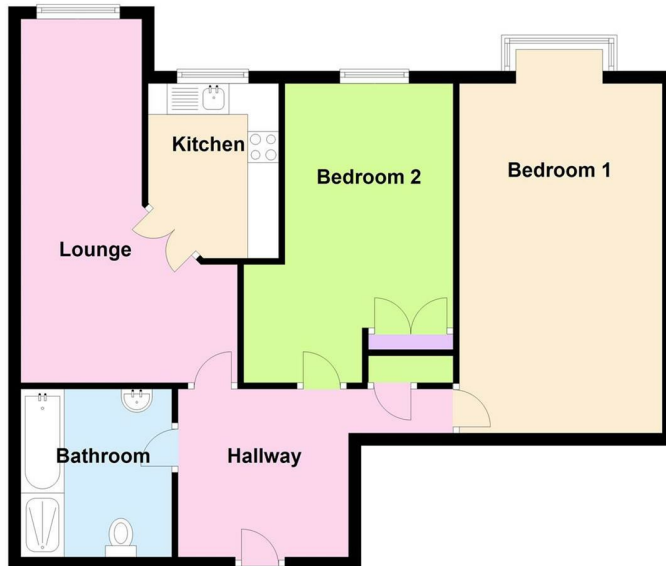
Gravesham Borough Council;  
COUNCIL TAX BAND E - £2,553.39 2023-2024

### ESTIMATED BROADBAND SPEEDS:

Standard 16 mb/s  
Superfast 65mb/s  
SOURCE - SPRIFT



First Floor



Energy Efficiency Rating		
	Current	Potential
Very energy efficient - lower running costs		
(92 plus) A		
(81-91) B		
(69-80) C		
(55-68) D		
(39-54) E		
(21-38) F		
(1-20) G		
Not energy efficient - higher running costs		
England & Wales	EU Directive 2002/91/EC	

184 Parrock Street  
Gravesend  
Kent  
DA12 1EN

www.sealeys.co.uk  
Email: sales@sealeys.co.uk  
Tel: 01474 369368



Agents Note: Whilst every care has been taken to prepare these marketing particulars, they are for guidance purposes only. These details, description and measurements do not form part of a contract and whilst every effort has been made to ensure accuracy this cannot be guaranteed. Interested parties must satisfy themselves by inspection or otherwise as to the correctness of them. Floor plans are not to scale and are for illustration purposes only. Any equipment, fixtures and fittings or any item referred to have not been tested unless specifically stated.